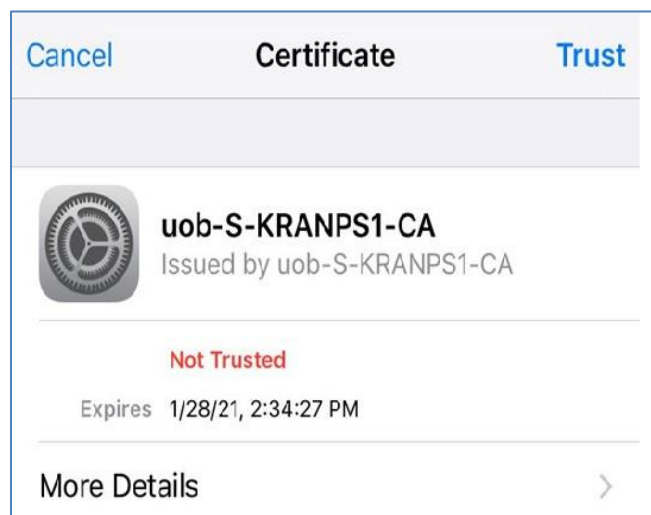




Student procedure to connect to the UOB WIFI network

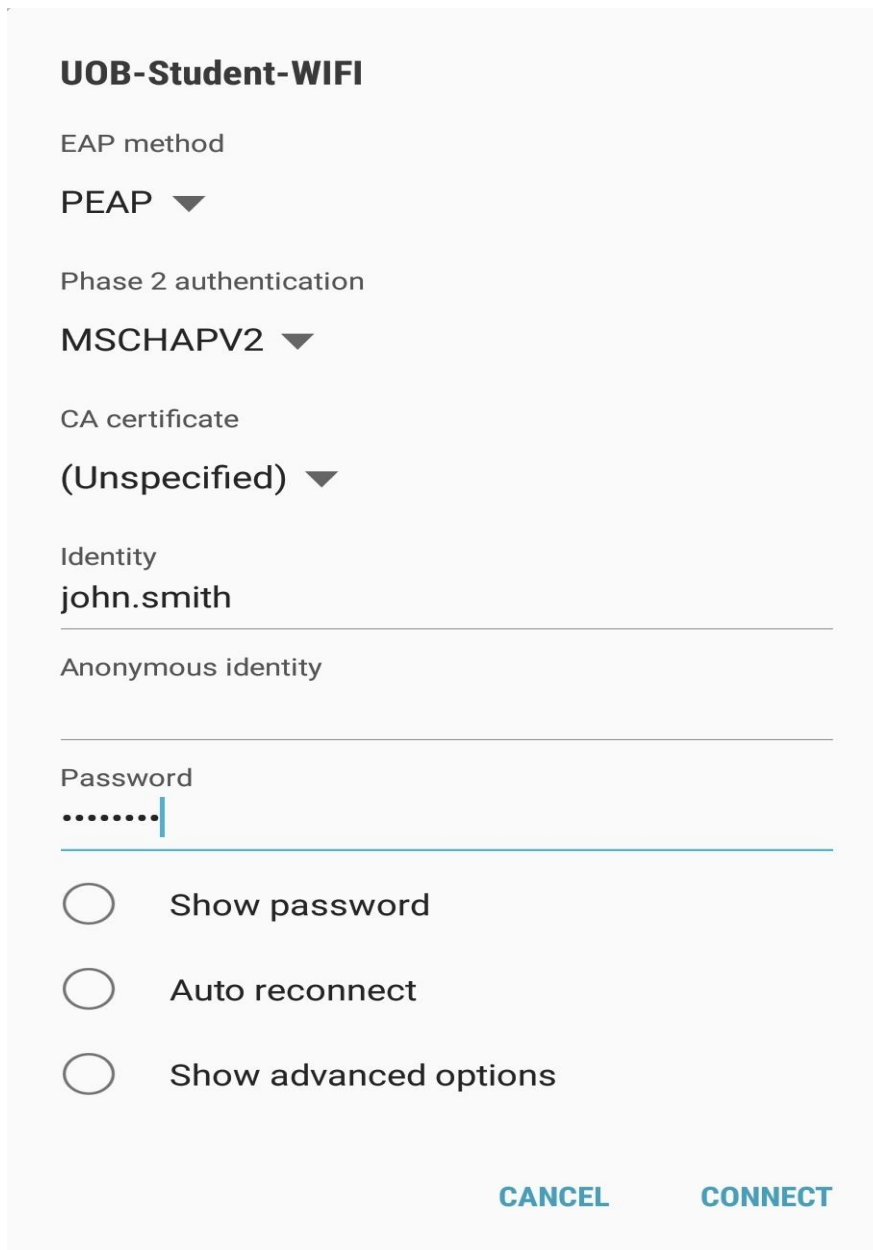
I. Steps to configure iPhone/IPAD (IOS) devices:

- 1- Connect your device to the SSID: **UOB-Student-WIFI**.
- 2- A prompt message will appear asking for **username** (use your email account for example john.smith) and your **email password**.
- 3- In case you receive a prompt message as shown bellow, just click on **Trust**.



II- Steps to configure **Android** devices:

- 1- Connect your device to the SSID **UOB-Student-WIFI**.
- 2- A prompt message will appear as shown below.



The screenshot shows a Wi-Fi configuration dialog for the network 'UOB-Student-WIFI'. The settings are as follows:

- EAP method:** PEAP ▼
- Phase 2 authentication:** MSCHAPV2 ▼
- CA certificate:** (Unspecified) ▼
- Identity:** john.smith
- Anonymous identity:** (Blank)
- Password:** (Hidden with dots)

At the bottom, there are three radio button options:

- Show password
- Auto reconnect
- Show advanced options

At the bottom right, there are two buttons: **CANCEL** and **CONNECT**.

- 3- Use your email account for **Identity**, for example [john.smith](#)
- 4- Leave Blank the Anonymous identity.
- 5- For **password** use your email password.
- 6- Click on **connect**.

III- Steps to configure Laptops(Windows 7 or 10):

1. In Windows, navigate to **Control Panel > Network and Internet > Network and Sharing Center.**

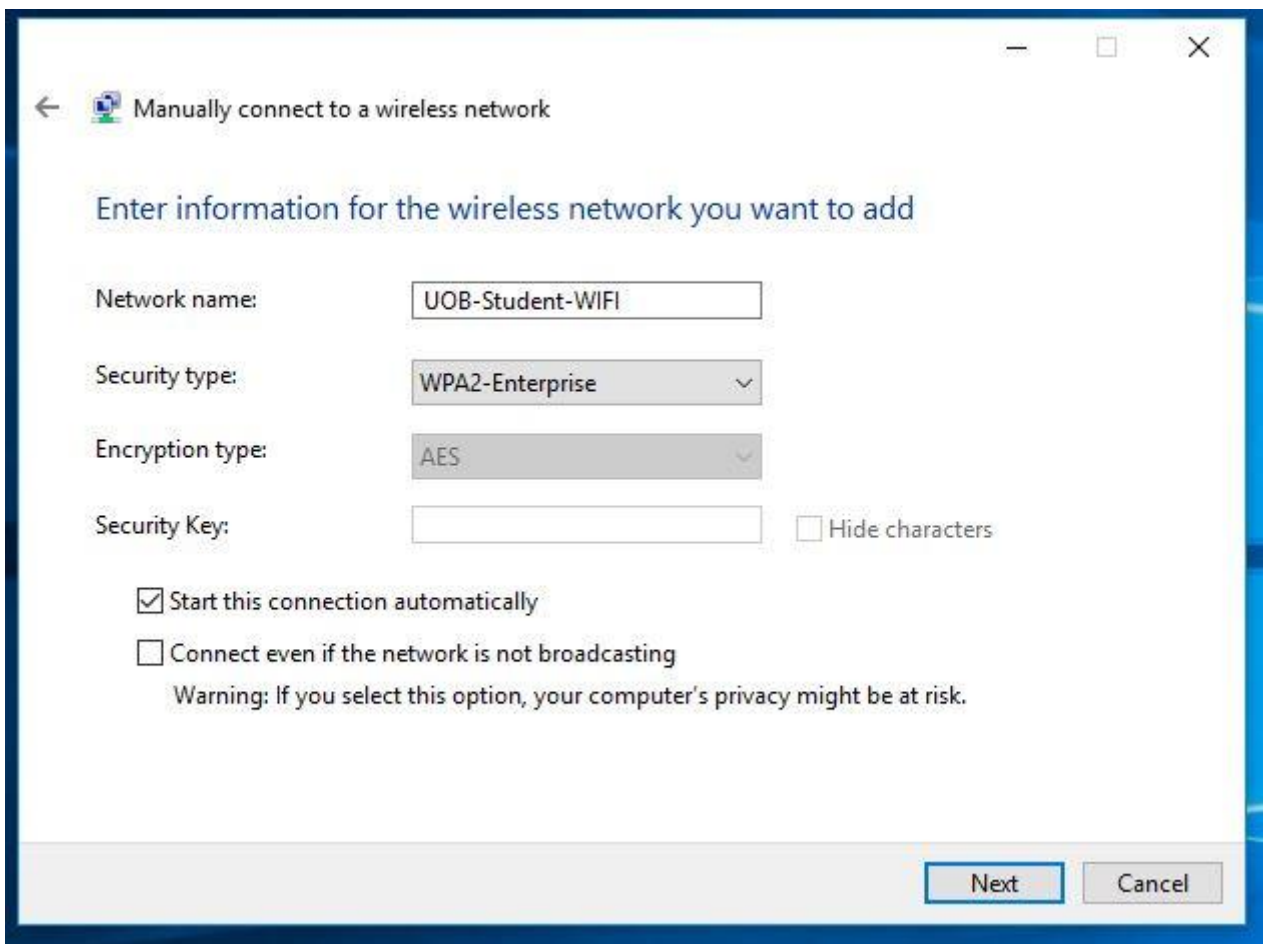
2. Click on **Set up a new connection or network.**

3. Click on **Manually connect to a wireless network**

4- On the next page, enter the following:

- **Network name:** It is the Wifi SSID name which is in this case **UOB-Student-WIFI**. It is case sensitive.
- **Security type:** Choose WPA2-Enterprise.
- **Encryption type:** Choose AES.
- Check **Start this connection automatically** if you want Windows to connect to this network automatically.

6. Click **Next.**



Manually connect to a wireless network

Enter information for the wireless network you want to add

Network name: UOB-Student-WIFI

Security type: WPA2-Enterprise

Encryption type: AES

Security Key: Hide characters

Start this connection automatically

Connect even if the network is not broadcasting

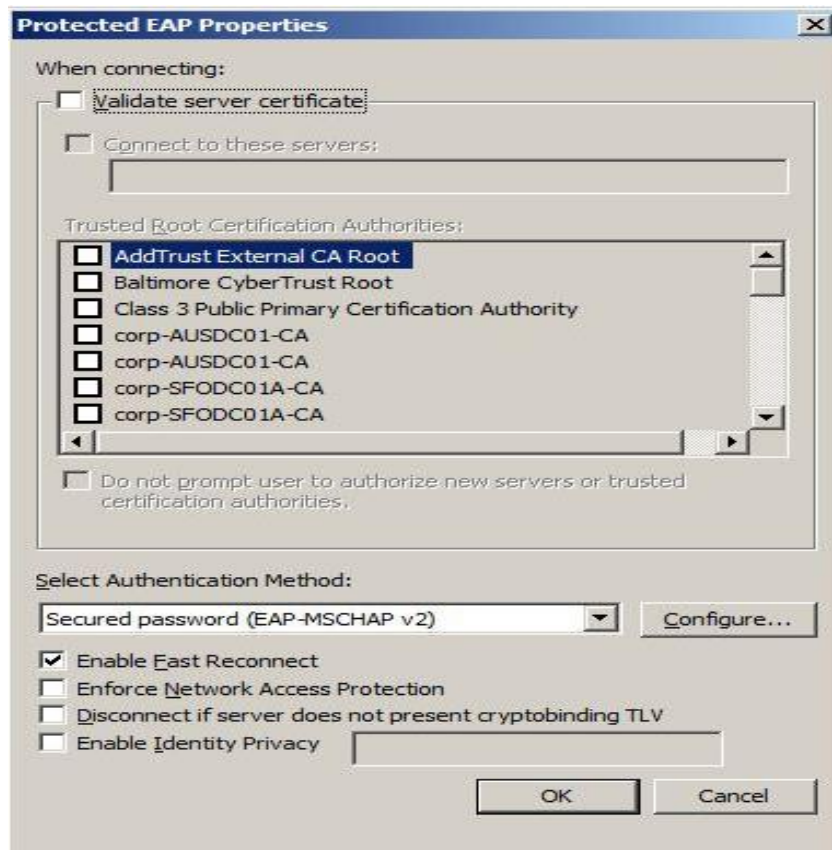
Warning: If you select this option, your computer's privacy might be at risk.

Next Cancel

7. Click **Change connection settings.**

8. Click **Settings.**

9. **Uncheck Validate server certificate** if the wireless client may not trust the RADIUS server certificate.

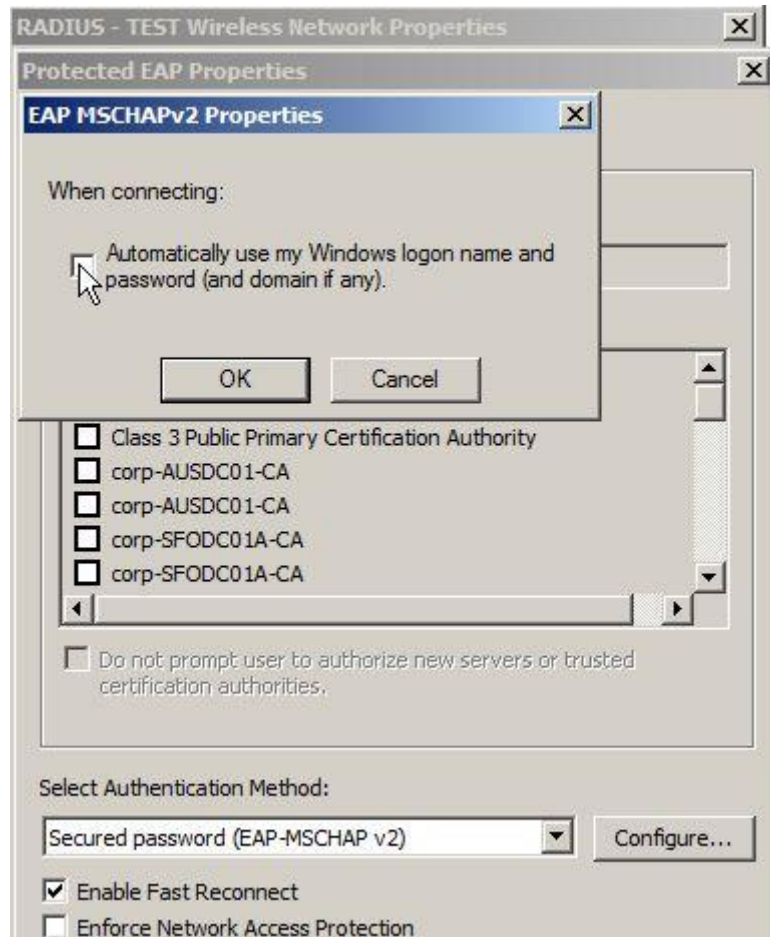


10. For the Authentication Method, choose **EAP-MSCHAP v2**.

11. Check **Enable Fast Reconnect**.

12. Click **Configure**.

13. Uncheck **Automatically use my Windows logon on name and password**.



13. Click **OK**.

14. To choose user or computer authentication, from the Security tab,

- Click **Advanced settings**.
- Select the **802.1X settings tab**.
 - Check **Specify authentication mode**.
 - Choose **User or computer authentication**. Or choose an alternate option if required.
 - Click **OK** to close out.

